



## Weston Series and Cup Racing

**Organising Authority:** Weston Sailing Club (WSC)

**Dates:** As published on [WSC Calendar](#)

**Location:** Abbey Hill, Netley Abbey, Southampton, SO31 5FA

## Notice of Race (NoR)

The notation '[NP]' in a rule means that a boat may not protest another boat for breaking that rule. This changes RRS 60.1(a).

### 1. Rules

- 1.1. The Series/Cup Racing will be governed by the rules as defined in 'The Racing Rules of Sailing'.
- 1.2. Competitors should note that WSC:
  - 1.1.1. [DP] implements and expects competitors to sail in compliance with the RYA Racing Charter.
  - 1.1.2. shall apply the Post-Race Penalty and the Advisory Hearing of the RYA Rules Disputes procedures.
  - 1.1.3. [DP] expects competitors to sail in accordance with the Southampton Water by-laws for Racing.

### 2. Sailing Instructions

- 2.1. The Sailing Instructions are available on the WSC website [weston.org.uk/admin](http://weston.org.uk/admin) or from the Race Office at the club.

### 3. Communication

- 3.1. The Race Office is located at WSC, Abbey Hill, Netley Abbey, Southampton, SO31 5FA, between the WSC Club room and the Changing rooms. When not open please telephone: 023 8045 2527.
- 3.2. The Official Notice Board (ONB) will be located on the board between the doors to the ladies and gents Changing rooms when Racing is scheduled.
- 3.3. Race signals during this event will be by boards displayed on the Race Box balcony and sound signals may also be provided.
- 3.4. [DP] While racing from the first warning signal until the end of the last race of the day, except in an emergency, a boat shall not make voice or data transmissions and shall not receive voice or data communication that is not available to all boats.

#### 4. Eligibility and Entry

- 4.1. The Series/Cup Racing is open to all multihull and dinghies with an RYA Portsmouth Number (PN).
- 4.2. The event is open to all boats complying with valid class/builder/measurement certificates.
- 4.3. Only boats belonging to members of Weston Sailing Club (WSC), or, approved Day Sailing members who have paid the prescribed membership/day sailing fees are eligible to race in this event.
- 4.4. Fleets for events are defined as follows:
  - 4.4.1. Series Racing (except Evening Series)
    - 4.4.1.1. Fleet 1 - PN 969 and faster (excluding RS300)
    - 4.4.1.2. Fleet 2 - PN 970 and slower (including RS300)
  - 4.4.2. Evening Series – single fleet.
  - 4.4.3. Cup Weekend Racing
    - 4.4.3.1. Fleet 1 - PN 942 and faster (including Cats and Monohulls but excluding IC and RS600).
    - 4.4.3.2. Fleet 2 - PN 943 to 1010 inclusive (including IC and RS600).
    - 4.4.3.3. Fleet 3 - PN 1011 and slower.
- 4.5. Eligible boats of members do not need to complete an entry form but will need to sign on.
- 4.6. [DP] Eligible boats of non-members must complete a 'Day Sailing Form' available on the WSC website [weston.org.uk/admin](http://weston.org.uk/admin).
- 4.7. To be considered an entry in the event, a boat shall complete all registration and entry requirements and have paid all fees (including membership and berth fees).
- 4.8. [DP] Competitors wishing to use sail numbers other than those declared on the relevant signing on form must notify the Race Officer before the warning signal of race concerned.

#### 5. Fees

- 5.1. Membership and Pound fees are available on the WSC website here: [weston.org.uk/costs](http://weston.org.uk/costs).
- 5.2. Day Sailing is £10 per person, per day.

#### 6. Crew Limitations

- 6.1. Crew limitations will comply with Class rules.

#### 7. Advertising

- 7.1. Boats may be required to display advertising chosen and supplied by the organizing authority.
- 7.2. The Organizing Authority may provide bibs that competitors are required to wear as permitted by the World Sailing Advertising Code.

#### 8. Qualifying Series and Final Series

- 8.1. Not Applicable.

#### 9. Schedule

- 9.1. Registration –
  - 9.1.1. [DP] Signing on must be completed for each day that racing is scheduled before the warning signal of the race being entered. Signing on sheets are provided in the WSC Club room. When racing 'Back-to-Back' (B2B) there is no need to sign on again for the second or third races of that day. For racing to occur, an overall minimum of 3 boats must sign on.
  - 9.1.2. Non-members must complete a 'Day Sailing Form' and make payment **at least 1 hour before** the warning signal of the first race of the day when racing is scheduled.
- 9.2. Equipment Inspection Schedule - Not Applicable.
- 9.3. Dates of racing are published on the [WSC Calendar](#).
- 9.4. Number of Races:
  - 9.4.1. Series Racing - 2 races per day are usually planned and do not count for Cup events.
  - 9.4.2. Cup weekends- 3 races per day are usually planned and do not count towards Series results.
- 9.5. The scheduled time of the **first start** is published on [WSC Calendar](#).
- 9.6. Not Applicable for this NoR.

## **10. Equipment Inspection**

- 10.1. Each boat shall produce or verify the existence of a valid measurement certificate.
- 10.2. A boat or equipment may be inspected at any time for compliance with the class rules, notice of race, and sailing instructions.
- 10.3. [DP] Boats shall also comply with RRS 78.1.

## **11. Clothing and Equipment**

- 11.1. Not Applicable for this NoR.

## **12. Venue**

- 12.1. The racing area is Southampton Water, within approx. a 1 mile radius of WSC (see Addendum 1).
- 12.2. [DP] Competitors must keep clear of the commercial shipping channel in Southampton Water.

## **13. Courses**

- 13.1. The race course, number of laps, start line, and finish line, will be displayed on boards on the lower SE wall of the WSC Race Box at least 15 minutes before the first fleet start time.
- 13.2. Racing marks shall be:
  - 13.2.1. Large yellow or orange inflatable triangular buoys, and/or,
  - 13.2.2. Orange inflatable cylindrical buoys, and/or,
  - 13.2.3. Any of the fixed Southampton Water buoys/posts.

## **14. Penalty System**

- 14.1. RRS 44.1 is changed so that the Two-Turns Penalty is replaced by the One-Turn Penalty.
- 14.2. RRS Appendix P applies with the Two-Turns penalty replaced by the One-Turn Penalty.

## **15. Scoring**

- 15.1. Scoring will be calculated using handicap corrected average lap times.
- 15.2. Three races are required to be completed to constitute a series.
- 15.3. When fewer than 4 races have been completed, a boat's series score will be the total of her race scores.
- 15.4. When 4 or more races have been completed, a boat's series score will be the total of her race scores, but excluding her worst score(s) as detailed in the Sailing Instructions.
- 15.5. Rule A5.3 applies.

## **16. Support Person Vessels**

- 16.1. [DP] Support vessels should be identified to the organising authority at least 24 hours before the event and may be required to carry markings as directed by the organising authority or Race Officer.

## **17. Chartered or Loaned Boats**

- 17.1. Not Applicable.

## **18. Berthing**

- 18.1. [DP] Boats shall be kept in their assigned berths while in the boat park and not moved without prior written approval of the Race committee or Pound Manager.

## **19. Haul-out Restrictions**

- 19.1. Not Applicable.

## **20. Diving Equipment and Plastic Pools**

- 20.1. Not Applicable.

## **21. Data Protection**

- 21.1. Weston SC adheres to the principles and lawful basis of processing data under the General Data Protection Regulation (GDPR). We will hold your personal data relating to the event on our systems and we will review your personal data periodically to establish whether we are still entitled to process it. If we decide that we are not entitled to do so, we will stop holding your personal data except that we will retain it in an archived form in order to be able to comply with future legal obligations. We will only ever share your data for the purpose of depicting the racing, results, analytics, and in media reports distributed to appropriate publications and regular social media platforms.

## 22. Risk Statement

- 22.1. RRS 3 states: "The responsibility for a boat's decision to participate in a race or to continue to race is hers alone." By participating in this event each competitor agrees and acknowledges that sailing is a potentially dangerous activity with inherent risks. These risks include strong winds and rough seas, sudden changes in weather, failure of equipment, boat handling errors, poor seamanship by other boats, loss of balance on the unstable platform and fatigue resulting in increased risk of injury. Inherent in the sport of sailing is the risk of permanent, catastrophic injury or death by drowning, trauma, hypothermia or other causes.
- 22.2. The provision of safety equipment and boats by Weston Sailing Club is neither a guarantee that assistance can be rendered to any competitor in need, nor an acceptance of any responsibility for rescue of competitors.
- 22.3. Further, in the event that any assistance is rendered to a competitor, no liability for any loss, damage or injury to the competitor and/or boat and its equipment is accepted by either the Club or the crew of such rescue craft.

## 23. Insurance

- 23.1. Each participating boat shall be insured with valid third-party liability insurance with a minimum cover of £3,000,000 per incident or the equivalent.

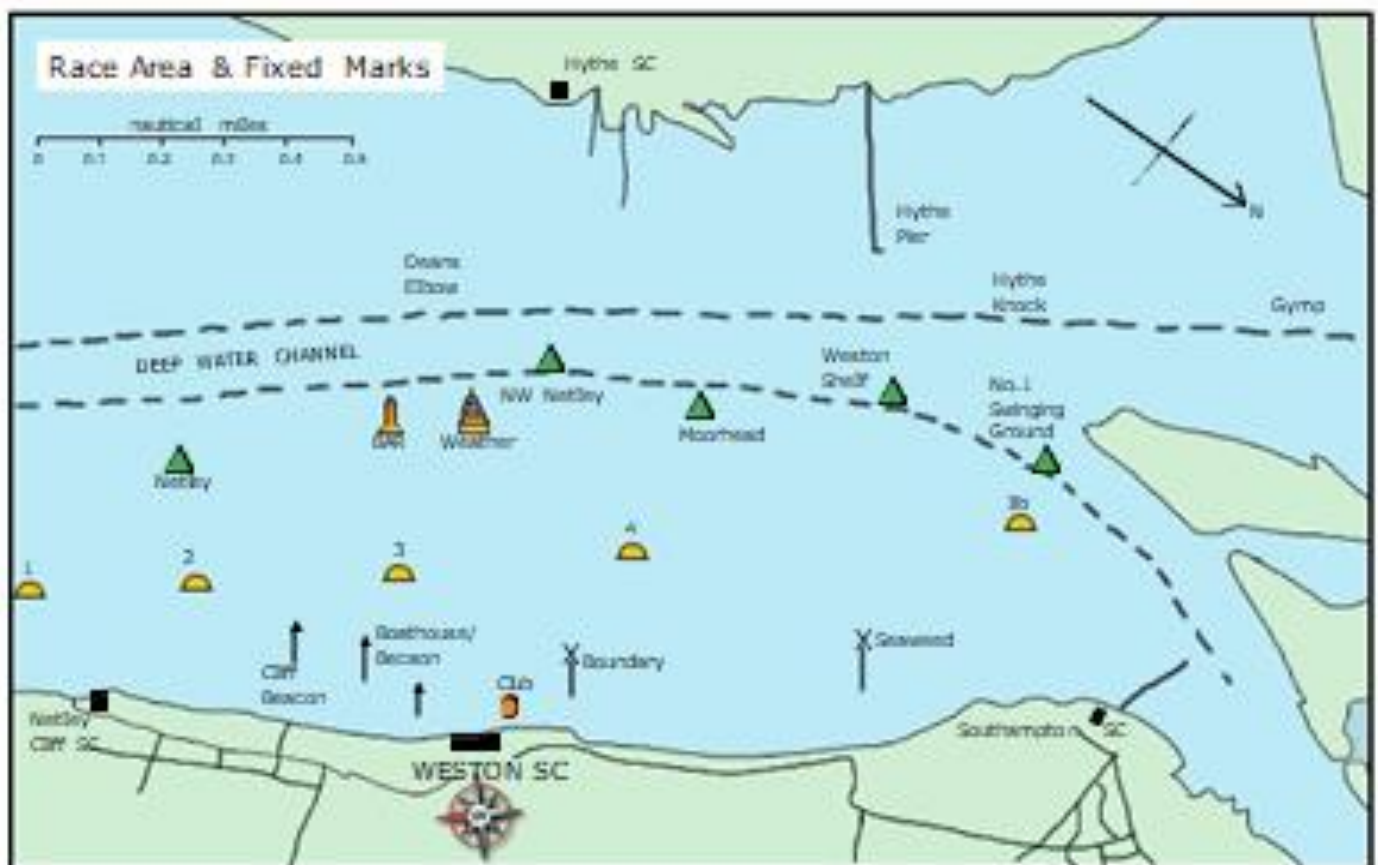
## 24. Prizes

- 24.1. WSC Club Prizes will be given for the first place for each fleet in a Series or Cup event.
- 24.2. Additional prizes may be made available by WSC or by Class associations participating in, or alongside, WSC racing.

## 25. Further Information

- 25.1. For further information please contact: [administrator@weston.org.uk](mailto:administrator@weston.org.uk).

## Addendum 1 – WSC Race Area



*Note: Not for navigation and mark positions for guidance only*